

# SJB 19" NETWORK CABINET



SJB 15 U cabinet finished in RAL 7035, without desktop

## CABINET FOR OFFICE APPLICATIONS

- SJB cabinets are perfect solution for small network systems installed in offices.
- The design of the cabinet is based on a self-supporting body with no frame.
- The cabinet can have a desktop made of furniture board to easily blend in with the existing interior décor.

## TECHNICAL DATA

### Material

Body, rear panel, mounting angles - sheet steel  
Door - safety glass

### Protection degree

IP 20 in accordance with EN 60529

### Surface finishing

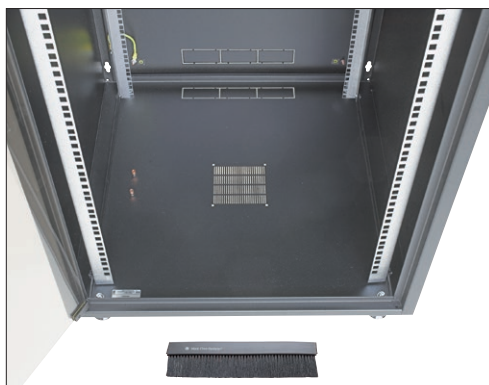
Body and rear panel – powder painted in light grey (RAL 7035) or black (RAL 9005).  
Mounting angles – Al-Zn coated.

## SCOPE OF DELIVERY

- cabinet body with safety glass door and removable rear panel,
- two pairs of mounting angles spaced at 19",
- four levelling feet,
- rear panel earthing conductor,
- brush strip for the cable opening.

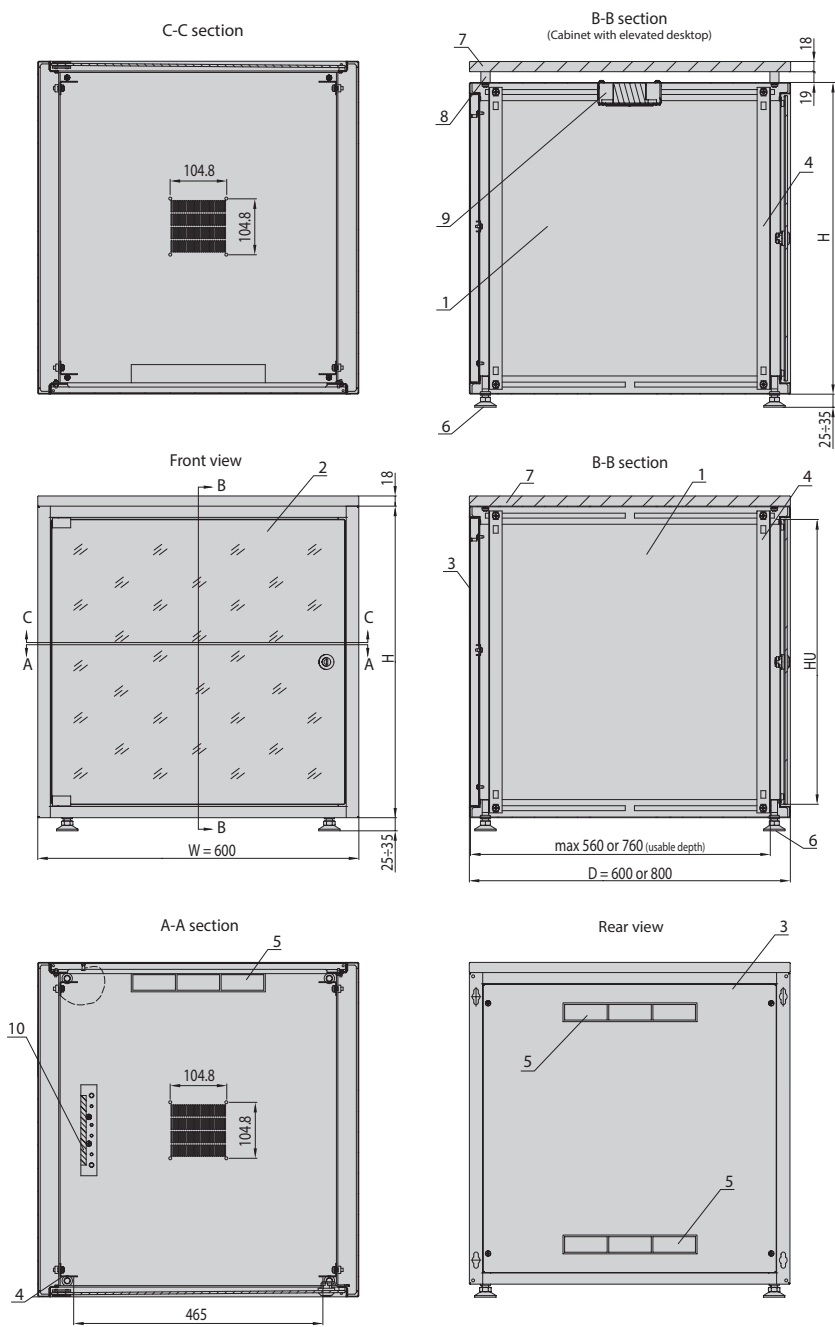
## SUPPLEMENTARY ACCESSORIES (ordered separately)

- desktop - available in three different colours (page 55),
- desktop elevation kit - spacing sleeves (page 55),
- castors (page 54),
- earthing bar (page 66),
- brush strip for the cable opening (page 55),
- shelves, blanking plates, fan, power strips etc. (pages 66, 72-73, 84, 87-89, 104).



View of the bottom plate in the SJB cabinet. On the back of the cabinet there are cable openings covered with knock-out blanking plate which can be replaced with a brush strip (one brush strip is factory-mounted on the top plate, the other one can be ordered as supplementary accessories).

NETWORK CABINET **SJB 19"**



**SJB 15 U cabinet**  
finished in RAL 9005, with desk-  
top made of Calvados-laminated  
MDF board

**DESIGN**

- 1. Cabinet's body
- 2. Glass door
- 3. Rear panel
- 4. Mounting angle
- 5. Knock-out blanking plate
- 6. Levelling feet

Supplementary accessories  
ordered separately:  
7. Desktop (page 55)  
8. Spacing sleeve for roof elevation  
(page 55)  
9. Fan (page 66)  
10. Earthing bar (page 66)

**REFERENCE CHART**

Total width W [mm]	Total depth D [mm]	Body height H [mm]	Usable height HU [U = 44.45 mm]	Maximum load capacity [kg]	Catalogue number of cabinet without desktop*	
					Cabinet finished in RAL 7035	Cabinet finished in RAL 9005
600	600	604	12 U	30	W-3987-01-02-011-BBL	W-3987-01-02-161-BBL
		737	15 U	38	W-3987-01-03-011-BBL	W-3987-01-03-161-BBL
		871	18 U	45	W-3987-01-04-011-BBL	W-3987-01-04-161-BBL
	800	737	15 U	38	W-6729-01-03-011-BBL	W-6729-01-03-161-BBL
		871	18 U	45	W-6729-01-04-011-BBL	W-6729-01-04-161-BBL

\*) The desktop is ordered separately - see page 55

# SJB 19" NETWORK CABINET

## SUPPLEMENTARY ACCESSORIES



SJB 15 U cabinet finished in RAL 9005, equipped with black desktop, castors and other accessories



### Castors for SJB cabinet

Plastic castors, mounted on a steel bolt M8.  
Height of the castors (without fixing bolt): 62 mm

#### Scope of delivery

Set: 2 locking castors, 2 non-locking castors.

Package	Catalogue number
1 set	W-3987-20-00-000

NETWORK CABINET **SJB 19"**

SUPPLEMENTARY ACCESSORIES

**Desktop**

18 mm thick furniture desktop for mounting on the top plate of SJB cabinet.

Available in three color versions.

**Material**

Laminated MDF board.

**Scope of delivery**

Desktop with fixing accessories.

Colour	Dimensions [mm]	Catalogue number
Calvados	600 x 600	W-3987-07-00-000
	600 x 800	W-6455-06-00-000
Black	600 x 600	W-3987-07-00-161
Light grey	600 x 800	W-6455-06-00-U112

Package: 1 pc.



Calvados



Black



Light grey

**Desktop elevation kit**

The kit makes it possible to elevate the desktop by 19 mm over the top plate, thus increasing air flow through the cabinet, and enables fan mounting to the top plate.

**Scope of delivery**

Set: 4 screws M6x30, 4 washers, 4 spacing sleeves.

Package	Catalogue number
1 set	W-3987-90-00-000



**Brush strip for cable opening**

For blinding cable openings in SJB cabinet following the removal of blanking plates.

**Material**

Plastic.

**Scope of delivery**

Clip-on brush strip without fixing accessories.

Package	Catalogue number
1 pc.	W-3504-22-00-000



**Cross profile**

Horizontally mounted to the rear wall of SJB cabinet.

**Material**

Al-Zn coated sheet steel.

**Scope of delivery**

Cross profile with fixing accessories.

Package	Catalogue number
1 pc.	W-2048-24-01-000

